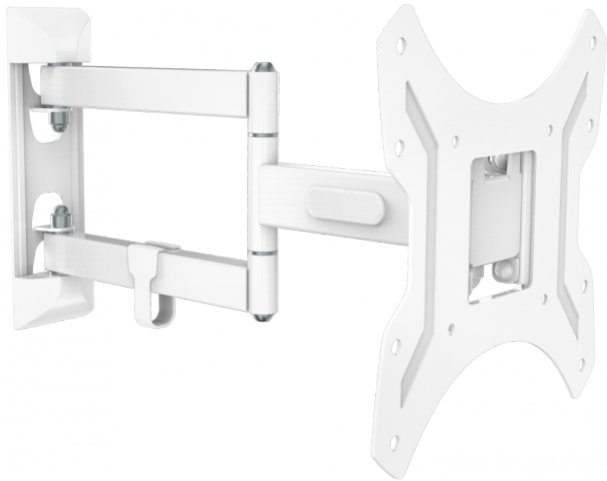


Double-articulated wall mount for flat panels that ranges from 20" to 50"

Cable management

Reach 39-402 mm (1.5-15.8")



Vision's **Vision Flat-Panel Mount – Wall Arm** range is tough and flexible. The VFM-WA2X2 fits any flat-panel LCD or LED screen which has 100 x 100 mm, 200 x 200 mm, or 200 x 100 mm rear mounting holes.

Up to 50"

Most displays up to 50" use VESA 100 or 200 mounting points, so the WA2X2 fits the majority of displays up to this size. If a larger display has the correct mounting points and weighs less than the SWL this mount can support it safely.

Fast Installation

The mounting plate fixes to the back of the display, then just drop the display into place on the wall arm and lock in place with a single nut.

Rotation

Didn't fix the wall plate perfectly plumb? No problem! 6° of rotation allow you to get the display level easily once the display is in place.

SWL 20 kg

This mount has a "safe working load" of 20 kg (44.1 lb). It is made of steel to make it robust.

Cable Management

Simple clips allow tidy cable routing.

Tilt and Swivel

-2-12° tilt and 90° swivel. Use this mount to fix a display in a corner up high in a waiting room, or fix displays around an office.

VESA

The VESA standard is based on how far apart the mounting holes are on the back of your flat-panel. Holes 200 x 200 mm apart are known as VESA 200 and will suit this mount. This product also fits displays with smaller VESA sizes listed below.

SPECIFICATIONS

PRODUCT DIMENSIONS

see image

PACKAGED DIMENSIONS

342 x 290 x 60 mm / 13.5" x 11.4" x 2.4" (length x width x height)

PRODUCT WEIGHT

2 kg (4.4 lbs)

PACKAGED WEIGHT

3.0 kg / 6.6 lbs

SAFE WORKING LOAD

20 kg (44.1 lbs)

CONSTRUCTION MATERIAL WALL PLATE

2.5 mm cold-roll steel

CONSTRUCTION MATERIAL DISPLAY PLATE

2.5 mm cold-roll steel

COLOUR

White

VESA SIZES

200 x 200 mm 200 x 100 mm 100 x 100 mm

ACCESSORIES INCLUDED

4 x M4 12 mm screw 4 x M4 25 mm screw 4 x M5 12 mm screw 4 x M5 25 mm screw 4 x M6 12 mm screw 4 x M6 25 mm screw 4 x M8 16 mm screw 4 x M8 25 mm screw

WARRANTY

Lifetime return-to-base

COMPLIANCES

RoHS, REACH