

# Flat-Panel Wall Mount 200×200

VFM-W2X2V2 EU SAP: 4754702 US SAP: 13445538  
[vav.link/vfm-w2x2v2](http://vav.link/vfm-w2x2v2)



VESA Wall Mount for displays and TVs  
Fits displays with 75 x 75, 100 x 100, 200 x 100, and 200 x 200mm mounting holes  
For 23-42" Displays  
Locking anti-theft screw  
Thumbscrews for fixing display  
Portrait or Landscape

**This Flat-Panel Mount (VFM) is quick and simple to install. It fits any display which uses a standard VESA mounting configuration up to 200 x 200 mm. It also supports TVs which have mounting points 200 mm wide x 100 mm tall. Suited for mounting professional displays in the office, or mounting a TV at home.**



## SWL 25 kg (55 lb)

Most desktop monitors are very lightweight, but interactive displays and kiosk touch-panels are much heavier. This product can easily support most monitors from 23" to 42".

## Thumbscrews

The screws included to fix the display are thumbscrews for fast tool-free assembly.

## Shallow

The thin design holds the display just 13 mm (0.51") off the wall. This looks better, reduces snagging risk, and because the load is close to the wall the mount has a higher safe working load rating.

## Secure

Once in place a locking screw is fitted to avoid theft.

## Portrait

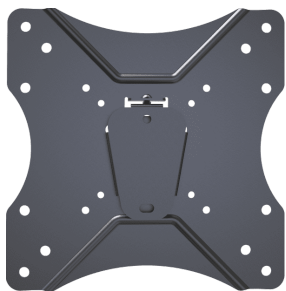
Mount the display portrait-style or landscape style as required.

## Simple Installation

A proven 2-part design allows fast fixing, with slotted holes on the wall part allowing leveling adjustment after fixing.

## Display Fixing Screws

Vision include more screw sizes than other manufacturers to ensure you get that display on the wall as quickly as possible every time.



## MANUAL

---

Quick manual

**EN PDF 3.30 MB**

[files.visionaudiovisual.com/products/VFM-W2X2V2/manuals/VFM-W2X2V2\\_quick\\_manual.pdf](files.visionaudiovisual.com/products/VFM-W2X2V2/manuals/VFM-W2X2V2_quick_manual.pdf)

## IMAGE

---

Product Images

**ZIP 44.52 MB**

<files.visionaudiovisual.com/products/VFM-W2X2V2/images/VFM-W2X2V2.zip>

## SPECIFICATIONS

---

### PRODUCT DIMENSIONS

230 x 230 x 13 mm / 9.1" x 9.1" x 0.5" (height x width x depth)

### PACKAGED DIMENSIONS

239 x 239 x 25 mm / 9.4" x 9.4" x 1.0"

### PRODUCT WEIGHT

0.71 kg (1.56 lbs)

### PACKAGED WEIGHT

0.97 g (2.14 lbs)

### SAFE WORKING LOAD

25 kg (55 lbs)

### CONSTRUCTION MATERIAL

Steel

### COLOUR

Black

### VESA SIZES

200 x 200 mm 200 x 100 mm 100 x 100 mm 75 x 75 mm

### ACCESSORIES INCLUDED

4 x M4 25 mm (1") screw 4 x M5 12 mm (0.5") screw 4 x M5 25 mm (1") screw 4 x M6 12 mm (0.5") screw 4 x M6 25 mm (1") screw 4 x M8 16 mm (0.6") screw 4 x M8 25 mm (1") screw

### WARRANTY

Lifetime return-to-base

### COMPLIANCES

REACH

### ORDER PART CODE

VFM-W2X2V2 [EU SAP: 4754702 / US SAP: 13445538]