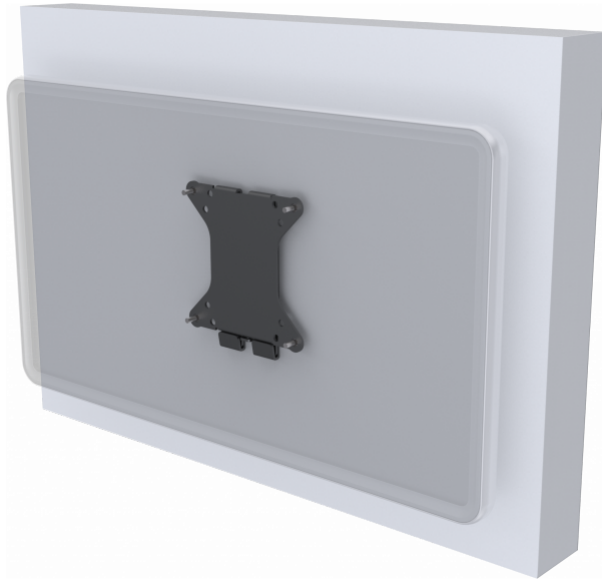


VESA Wall Mount for small-medium LCD Monitors

Fits displays with 50 x 50, 75 x 75 and 100 x 100mm mounting holes

Locking anti-theft mechanism



This **Vision Flat-Panel Mount** is robust and simple. It fits any flat-panel LCD or LED screen which uses a standard VESA100 mounting configuration – which are 100 x 100mm tall apart. Most small to medium desktop monitors use this mounting configuration.

#### SWL 30 kg

Most desktop monitors are very lightweight, but interactive displays and kiosk touch-panels are much heavier. Vision's VFM-W1x1 can take up to 30 kg – sufficient to support most monitors that ranges from 10" to 34".

#### Shallow

The thin design holds the display close to the wall. This looks better, reduces snagging risk, and because the load is close to the wall the mount has a higher safe working load rating.

#### Simple Installation

A proven 2-part design allows fast fixing, with slotted holes on the wall part allowing levelling adjustment after fixing.

#### Secure

Once in place a locking screw is fitted to avoid theft.

## SPECIFICATIONS

#### PRODUCT DIMENSIONS

127 x 115 x 9.5 mm / 5.0" x 4.5" x 0.4" (height x width x depth)

#### PACKAGED DIMENSIONS

140 x 125 x 20 mm / 5.5" x 5" x 0.8"

#### PRODUCT WEIGHT

0.30 kg (0.7 lbs)

#### PACKAGED WEIGHT

0.35 g (0.8 lbs)

#### SAFE WORKING LOAD

30 kg (66 lbs)

#### CONSTRUCTION MATERIAL

Steel

#### COLOUR

Black

#### VESA SIZES

100 x 100 mm / 4" x 4" 75 x 75 mm / 3" x 3" 50 x 50 mm / 2" x 2"

#### ACCESSORIES INCLUDED

4 x M4 12mm screw 4 x M5 12mm screw 4 x M6 12mm screw

#### WARRANTY

Lifetime return-to-base

#### COMPLIANCES

RoHS

