

# Heavy Duty Flat-Panel Wall Mount

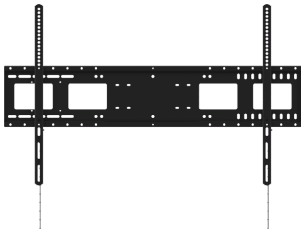
## 1000x600

VFM-W10X6 EU SAP: 4934297 US SAP: 13557609

[vav.link/vfm-w10x6](http://vav.link/vfm-w10x6)

Non-tilting Wall Mount for large-format flat panels 55-90"  
(subject to VESA pattern and weight limit)  
Mounting points up to 1000 (wide) x 600 mm (tall) apart  
Heavy duty 130 kg / 287 lb SWL  
Display latches in place  
Optional camera shelf

Vision's Vision Flat-panel Mount - Wall range is designed by Vision's engineering team for professional AV installers. This mount is no-compromise: very strong, fast to install, highly adjustable, everything included. The VFM-W10X6 fits any flat-panel LCD or LED screen which has rear mounting holes up to 1000 wide x 600 mm tall apart.



### Heavy Duty

Interactive flat panels are large and very heavy. Vision's VFM-W10X6 uses heavy gauge sheet metal to take the weight up to SWL 130 kg / 287 lb safely.

### Everything Included

Vision includes everything you need including a load of M5, 6, and 8 bolts in varying lengths to fix the vertical arms to the rear of the display.

### Side by Side

Two horizontal sections can be fixed together side by side for dual-display video conference or huddle room applications. Or extend the horizontal to bridge wide load bearing points in a wall.

### For 55-90" Displays

Fits most displays from 55-90" subject to VESA pattern and weight limit. Note: curved screens are not supported by this mount.

### Meets Regulations

The thin design holds the display just 36 mm / 1.4" off the wall. This looks better, reduces snagging risk, and because the load is close to the wall the mount has a higher safe working load rating.

### Designed for Professionals

A proven design allows fast fixing, and slotted holes on the wall part allowing levelling adjustment after fixing.

### Latches Securely

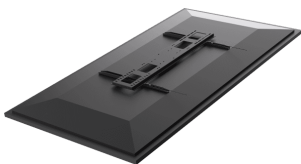
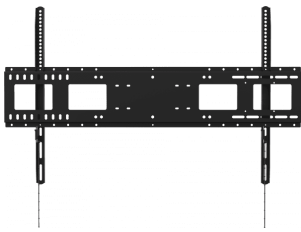
The display latches on the horizontal section as the display is hung in place. Snap the plastic pull-rods off to length so they are hidden behind the display. Give the pull-rods a downward tug to unlatch the display.

### Hide Media Player

Thoughtfully placed VESA 100 x 100 mm holes on the horizontal part allow a thin media player to fix behind the display out of sight.

### Optional Laptop Shelf

An optional shelf fixes at four different heights in 80 mm (3.1") increments to the horizontal part of the wall mount. The platform is 450 mm (17.7") wide by 306 mm (12.0") deep. At the lowest height setting the shelf is 680 mm (26.8") below the centre of screen. *Part Number: VFM-WLS [EU SAP: 4857149 / US SAP: 13557610] Due into stock late 2019*



VISION

### **Video Conference Shelf**

An optional shelf fixes in the centre above or below the display. Any camera including the Logitech Rally can be fixed to the shelf. It is also designed to accommodate Yamaha's YVC-1000, Barco's Clickshare CSE-200 base station, or Logitech's Meetup wall bracket can fix to the vertical part. With VESA 100 x 100 mm holes on the vertical section, product's like Heckler's Zoom Room iPad enclosure can be fixed. *Part Number: VFM-WVC [EU SAP: 5048878 / US SAP: tbc]*

## MANUAL

### Manual

**EN PDF 145.96 KB**

[files.visionaudiovisual.com/products/VFM-W10X6/manuals/VFM-W10X6\\_manual.pdf](files.visionaudiovisual.com/products/VFM-W10X6/manuals/VFM-W10X6_manual.pdf)

## CAD

### Cad

**ZIP 1.70 MB**

<files.visionaudiovisual.com/products/VFM-W10X6/cad/VFM-W10X6.zip>

## IMAGE

### Product Images

**ZIP 19.26 MB**

<files.visionaudiovisual.com/products/VFM-W10X6/images/VFM-W10X6.zip>

### Product Images

**PNG 1.77 MB**

<files.visionaudiovisual.com/products/VFM-W10X6/images/VFM-W10X6.png>

### Front

**PNG 421.28 KB**

[files.visionaudiovisual.com/products/VFM-W10X6/images/VFM-W10X6\\_front.png](files.visionaudiovisual.com/products/VFM-W10X6/images/VFM-W10X6_front.png)

### Front display

**PNG 3.71 MB**

[files.visionaudiovisual.com/products/VFM-W10X6/images/VFM-W10X6\\_front\\_display.png](files.visionaudiovisual.com/products/VFM-W10X6/images/VFM-W10X6_front_display.png)

### Rear

**PNG 2.21 MB**

[files.visionaudiovisual.com/products/VFM-W10X6/images/VFM-W10X6\\_rear.png](files.visionaudiovisual.com/products/VFM-W10X6/images/VFM-W10X6_rear.png)

### Rear angle

**PNG 1.71 MB**

[files.visionaudiovisual.com/products/VFM-W10X6/images/VFM-W10X6\\_rear\\_angle.png](files.visionaudiovisual.com/products/VFM-W10X6/images/VFM-W10X6_rear_angle.png)

### Rear angle display

**PNG 3.77 MB**

[files.visionaudiovisual.com/products/VFM-W10X6/images/VFM-W10X6\\_rear\\_angle\\_display.png](files.visionaudiovisual.com/products/VFM-W10X6/images/VFM-W10X6_rear_angle_display.png)

### Side display

**PNG 713.18 KB**

[files.visionaudiovisual.com/products/VFM-W10X6/images/VFM-W10X6\\_side\\_display.png](files.visionaudiovisual.com/products/VFM-W10X6/images/VFM-W10X6_side_display.png)

### Front angle display

**PNG 4.87 MB**

[files.visionaudiovisual.com/products/VFM-W10X6/images/VFM-W10X6T\\_front\\_angle\\_display.png](files.visionaudiovisual.com/products/VFM-W10X6/images/VFM-W10X6T_front_angle_display.png)

### Dims

**PNG 51.26 KB**

[files.visionaudiovisual.com/products/VFM-W10X6/images/VFM-W10X6\\_dims.png](files.visionaudiovisual.com/products/VFM-W10X6/images/VFM-W10X6_dims.png)

### Menu

**PNG 371.80 KB**

[files.visionaudiovisual.com/products/VFM-W10X6/images/VFM-W10X6\\_menu.png](files.visionaudiovisual.com/products/VFM-W10X6/images/VFM-W10X6_menu.png)

### Media player

**PNG 329.26 KB**

[files.visionaudiovisual.com/products/VFM-W10X6/images/VFM-W10X6\\_media\\_player.png](files.visionaudiovisual.com/products/VFM-W10X6/images/VFM-W10X6_media_player.png)

## SPECIFICATIONS

### PRODUCT DIMENSIONS

1045 x 635 x 36 mm / 41.1" x 25.0" x 1.4" (width x height x depth)

### PACKAGED DIMENSIONS

1080 x 235 x 40 mm / 42.5" x 9.3" x 1.6"

### PRODUCT WEIGHT

6.4 kg (14.1 lbs)

### PACKAGED WEIGHT

7.5 kg (16.5 lbs)

### SAFE WORKING LOAD

130 kg (287 lbs)

### CONSTRUCTION MATERIAL

Cold-rolled Steel 3 mm (0.12")

### COLOUR

Black

### VESA SIZES

1000 x 600 mm 1000 x 500 mm 1000 x 400 mm 900 x 600 mm 800 x 600 mm 800 x 500 mm 800 x 400 mm 700 x 400 mm 600 x 600 mm 600 x 500 mm 600 x 400 mm 500 x 500 mm 500 x 400 mm 400 x 600 mm 400 x 400 mm 400 x 300 mm 400 x 200 mm 300 x 400 mm 300 x 300 mm

### ACCESSORIES INCLUDED

4 x M5 16 mm screw 4 x M6 16 mm screw 4 x M6 25 mm screw 4 x M8 30 mm screw 4 x M8 50 mm screw 4 x 13 mm thick nylon spacers

### WARRANTY

Lifetime return-to-base

### COMPLIANCES

RoHS

### ORDER PART CODE

VFM-W10X6 [EU SAP: 4934297 / US SAP: 13557609]

### OPTIONAL ADD-ONS

VFM-WLS Side Shelf [EU SAP: 4857149 / US SAP: 13557610] VFM-WVC Video Conferencing Shelf [EU SAP: 5048878 / US SAP: tba]