

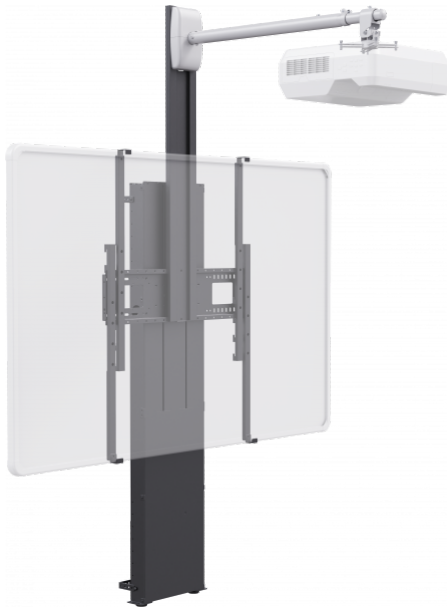
Optimised for Promethean ActivBoard 78 and 88"

Works with most short throw projectors

700 mm height adjustment

Telescopic universal boom for projector

Fixes to wall



Vision's Flat-Panel Mount VFM-F40/WB is a heavy-duty motorised floor stand for large interactive whiteboards. It is super-rigid, powerful, and comes partially assembled. Just take it out of the box, install the feet, and fix it to the wall.

This stand is optimised for use in class rooms where a high-quality fit and finish is essential. This stand is a modified version of our VFM-F40 display floor stand. It is modified to work with the Promethean ActivBoards and UST-P3, but it will also work with other models.

Components included:

SWL 130kg

Uses heavy-gauge components to take the weight, and a powerful linear drive pushes up (and pulls down) with 1500 Newtons of force, moving at a relatively quick 19 mm per second.

700 mm Motorised Height Adjustment

The central column is a fixed 1.7 metres tall, with the moving assembly moving up and down the column 700 mm.

Extremely Tight Tolerances

The moving mechanism uses a roller-slide design with four quality bearings which glide up polished rails. The tolerances of bearings on rail result in zero unwanted movement.

Wireless Control

A remote control is included with simple up and down functions. Users can use the holder, or a magnet sticker to fix the remote to the side of the column out of sight.

Four Wall Brackets

Brackets fix the column to the wall at a variety of heights. They can secure the column flush against the wall or standing off up to 140 mm. The column can be anchored high up on the wall, giving installers plenty of options.

Safety Stop

A safety stop is triggered when the display lowers onto hard furnishings. Note soft items may fail to trigger the stop. Care should be taken whenever moving the display down.

Feet or Fixed

Adjustable feet are included to make it easy to adjust level, or swap those out for included brackets which fix the column to the floor.

Cable Management

Generous cable entry holes on the sides make routing cables quick and easy. There are holes in the rear for cable ties.

Hide Mess

Plenty of space behind the front cover to hide cables, media players, mini PCs, and power distribution boards.

SPECIFICATIONS

VFM-F40/WB Motorised Whiteboard Floor Stand

WHAT YOU GET

1 x VFM-F40FRAME 1 x VFM-W8X6 1 x VFM-WB_UR 1 x TM-ST2 2 x VFM-WSB

PRODUCT DIMENSIONS

See CAD

PACKAGED DIMENSIONS

VFM-F40FRAME: 1400 x 380 x 140 mm VFM-W8X6: 880 x 235 x 40 mm TM-ST2: 1160 x 160 x 115 mm VFM-WB_UR: TBC

PRODUCT WEIGHT

VFM-F40FRAME: 26 kg VFM-W8X6: 5.8 kg TM-ST2: 5.5 kg VFM-WB_UR: TBC Total: kg / lb

PACKAGED WEIGHT

VFM-F40FRAME: 29.9 kg VFM-W8X6: 6.8 kg TM-ST2: 6 kg VFM-WB_UR: TBC Total: kg / lb

SAFE WORKING LOAD

130 kg

CONSTRUCTION MATERIAL

Steel

COLOUR

Powercoated Matt Black

MOTOR TYPE

Linear-drive

SAFETY STOP

Yes

FORCE

1500 N (both up and down)

MOVEMENT SPEED

19 mm per second

HEIGHT ADJUSTMENT RANGE

700 mm

ACCESSORIES INCLUDED

WITH VFM-F40FRAME 1 x EU Figure-8 C7 Power cable 2.5 m long 1 x UK Figure-8 C7 Power cable 2.5 m long 1 x AU Figure-8 C7 Power cable 2.5 m long 1 x US Figure-8 C7 Power cable 2.5 m long (removed after Sep 23) 1 x IR Remote Control (A23 12v battery included) 4 x Wall Brackets WITH VFM-W8X6 4 x M5 16 mm screw 4 x M6 16 mm screw 4 x M6 25 mm screw 4 x M8 16 mm screw 4 x M8 35 mm screw 2 x M8 45 mm screw

POWER SUPPLY

110-230V Integrated Power Supply

WARRANTY

Lifetime return-to-base UK Only: 5 years onsite

COMPLIANCES

RoHS, WEEE, FCC, CE/EMC, CE/LVD, RCM/DOC, RCM/POC ADA Compliant (Americans with Disability Act)

SPARE REMOTE CONTROL

VFM-F40RC [EU SAP: 6360036] With Integrated PSU