



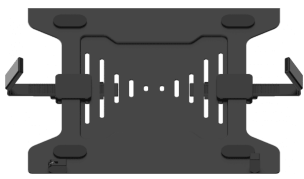
Black Monitor Desk Post 100×100

VFM-DP2B EU SAP: 4740217 US SAP: 13445516

vav.link/vfm-dp2b

Double-articulated desk mount for displays up to 32"
Popular post-style in Black
Parts included for grommet or clamp fixing to desk
Optional Laptop Shelf
Quick release VESA plate
Thumbscrews for fast assembly

The VFM-DP2 (Vision Flat-panel Mount – Desk Post) offers a massive range of movement and fits any monitor which has 75 x 75 mm or 100 x 100 mm rear mounting holes. Vision have obsessed over the detail to make it as quick and easy to install.

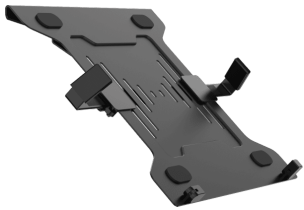


Thumbscrews

Vision include more screws than other manufacturers to ensure you can successfully install your display with the screws included, and the screws are thumbscrews so you can be done faster, without a tool.

Quick Release

The VESA plate is quick-release to assist with fast assembly.



Optional Shelf

The shelf fixes to the mount's VESA plate and supports laptops or tablets from 240-420 mm (9.5-16.5") wide. Adjustable clamps help secure the device in place.

SWL 8 kg

The VFM-DP2 can support monitors up to 8 kg (17.6 lbs).

Display Size 13-32"

If a larger display has the correct mounting points and weighs less than the SWL this mount can support it safely.



Double-Pivot

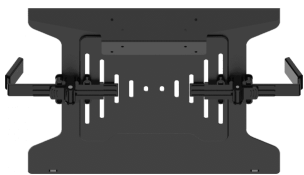
Two articulated points in the horizontal arm allow a huge range of positioning. The arm reach is up to 460 mm (18").

Cable Management

Clips on the arm secure cables which can be routed along the mount.

Variable Height

Slide the arm up and down the post, then lock off at required height. The post is 443 mm (17.3") tall.



Desk Thickness

The clamp fixes to a table from 10-88 mm (0.4-3.5") thick.

Grommet Included

In some applications you might prefer to drill a hole in the table and fix the mount directly.

Swivel and Tilt

The ultra-flexible design gives -45°~45° of tilt adjustment, and -90°~90° of swivel range.

Rotate

Easily move the monitor from landscape to portrait style.

Scratch-Resistant

The powder-coated surface is thicker and more scratch resistant than paint.



VISION

IMAGE

Product Images

ZIP 4.08 MB

<files.visionaudiovisual.com/products/VFM-DP2B/images/VFM-DP2B.zip>

Front

PNG 670.97 KB

files.visionaudiovisual.com/products/VFM-DP2B/images/VFM-DP2SHELFB_front.png

Product Images

PNG 1.24 MB

<files.visionaudiovisual.com/products/VFM-DP2B/images/VFM-DP2SHELFB.png>

Side

PNG 372.79 KB

files.visionaudiovisual.com/products/VFM-DP2B/images/VFM-DP2SHELFB_side.png

Rear

PNG 833.81 KB

files.visionaudiovisual.com/products/VFM-DP2B/images/VFM-DP2SHELFB_rear.png

Product Images

PNG 491.26 KB

<files.visionaudiovisual.com/products/VFM-DP2B/images/VFM-DP2B.png>

Front

PNG 233.94 KB

files.visionaudiovisual.com/products/VFM-DP2B/images/VFM-DP2B_front.png

Side

PNG 326.08 KB

files.visionaudiovisual.com/products/VFM-DP2B/images/VFM-DP2B_side.png

Menu

PNG 142.69 KB

files.visionaudiovisual.com/products/VFM-DP2B/images/VFM-DP2B_menu.png

Dims

PNG 90.55 KB

files.visionaudiovisual.com/products/VFM-DP2B/images/VFM-DP2_dims.png

SPECIFICATIONS

PRODUCT DIMENSIONS

548 x 520 x 114 mm / 21.6" x 20.5" x 4.5"

PACKAGED DIMENSIONS

489 x 180 x 120 mm / 19.3" x 7.1" x 4.7"

PRODUCT WEIGHT

2.9 kg / 6.4 lbs

PACKAGED WEIGHT

3.74 kg / 8.2 lbs

SAFE WORKING LOAD

8 kg (17.6 lbs)

CONSTRUCTION MATERIAL

Powdercoated Steel

COLOUR

Black

VESA SIZES

75 x 75 mm 100 x 100 mm

ACCESSORIES INCLUDED

4 x M4 12 mm (1/2") screw 4 x M4 16 mm (2/3") screw 4 x M5 12 mm (1/2") screw 4 x M5 16 mm (2/3") screw

WARRANTY

Lifetime return-to-base

COMPLIANCES

REACH

ORDER PART CODE

VFM-DP2B [EU SAP: 4740217 / US SAP: 13445516]

OPTIONAL SHELF

VFM-DP2SHELFB [EU SAP: 4850694 / US SAP: 13445510]