



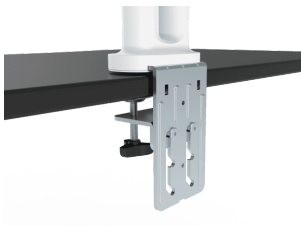
Flat-Panel Desk Arm 100×100 Dual

VFM-DAD3 EU SAP: 4684961 US SAP: 13293568

vav.link/vfm-dad3

Double-articulated desk mount for two monitors up to 34"
Cable Management and adjustable dampers
Aluminium construction, White
Quick-Clamp

The Vision Flat-Panel Mount – Desk range is tough and flexible. The VFM-DAD (desk arm dual) accommodates two flat-panel LCD or LED screens which have 100 x 100mm rear mounting holes; almost all computer monitors.



Premium Construction

Aircraft-grade aluminium arms are finished with a stylish anti-scratch surface.

Thumbscrews

Thumbscrews are used to fix the display to help speed up the installation of this mount.

Quick Release

The VESA plates attach to the rear of the displays then clip into position on the arm, making assembly fast and easy.

SWL 18 kg

The VFM-DAD can support two monitors up to 18 kg (40 lbs) in total.

Up to 34"

Fits screens that ranges from 10" to 34". If a larger displays have the correct mounting points and weighs less than the SWL this mount can support it safely.

Adjustable Dampers

To allow for different loads the dampers can be tightened or loosened to make sure the display stays where it is when you let go of it.

Cable Management

Clip on covers allow tidy cable routing.

Clamp or Grommet

The VFM-DAD can be clamped or a fixing adaptor is included to bolt it to the table (requires drilling hole in table).

Quick Clamp

The clamp has a quick-release to adjust quickly for varying table thicknesses as thin as 14 mm (0.44").

Rotate to Portrait-Style

Almost endless tilt, rotation, swivel, and height adjustment puts the display right where you need it.

Move independently

Move each display up and down independently to get the right ergonomic setup.

Maximum Span

The centres of the displays can be up to 1200 mm (47.2") apart. The maximum height from the desk top to the centre of the screens is 510 mm (20.1").



VISION



VISION

MANUAL

Manual

EN PDF 4.92 MB

files.visionaudiovisual.com/products/VFM-DAD3/manuals/VFM-DAD3_manual.pdf

CAD

CAD

ZIP 1.01 MB

<files.visionaudiovisual.com/products/VFM-DAD3/cad/VFM-DAD3.zip>

IMAGE

Product Images

ZIP 5.37 MB

<files.visionaudiovisual.com/products/VFM-DAD3/images/VFM-DAD3.zip>

Front

PNG 696.47 KB

files.visionaudiovisual.com/products/VFM-DAD3/images/VFM-DAD3_front.png

Clamp

PNG 0.97 MB

files.visionaudiovisual.com/products/VFM-DAD3/images/VFM-DAD3_clamp.png

Front angle

PNG 567.74 KB

files.visionaudiovisual.com/products/VFM-DAD3/images/VFM-DAD3_front_angle.png

Up front

PNG 570.69 KB

files.visionaudiovisual.com/products/VFM-DAD3/images/VFM-DAD3_up_front.png

Left

PNG 637.78 KB

files.visionaudiovisual.com/products/VFM-DAD3/images/VFM-DAD3_left.png

Up right

PNG 649.45 KB

files.visionaudiovisual.com/products/VFM-DAD3/images/VFM-DAD3_up_right.png

Dims

JPEG 180.34 KB

files.visionaudiovisual.com/products/VFM-DAD3/images/VFM-DAD3_dims.jpg

Right

PNG 709.11 KB

files.visionaudiovisual.com/products/VFM-DAD3/images/VFM-DAD3_right.png

Menu

PNG 281.03 KB

files.visionaudiovisual.com/products/VFM-DAD3/images/VFM-DAD3_menu.png

SPECIFICATIONS

PRODUCT DIMENSIONS

see image

PACKAGED DIMENSIONS

422 x 325 x 143 mm / 16.6" x 12.8" x 5.6" (length x width x height)

PRODUCT WEIGHT

6.3 kg (13.9 lbs)

PACKAGED WEIGHT

7.4 kg (16.3 lbs)

TOTAL SAFE WORKING LOAD

9 kg (19.9 lbs)

CONSTRUCTION MATERIAL

Aluminium

COLOUR

White

VESA SIZES

100 x 100 mm / 3.9" x 3.9" 75 x 75 mm / 3.0" x 3.0"

ACCESSORIES INCLUDED

8 x M4 12mm screws 8 x M5 12mm screws 3 x M6 12mm screws

MINIMUM DISPLAY/LAPTOP WEIGHT

1.4 kg / 3.1 lb

WARRANTY

Lifetime return-to-base

COMPLIANCES

REACH

ORDER PART CODE

VFM-DAD3 [EU SAP: 4684961 / US SAP: 13293568]