



Telescopic Projector Ceiling Mount

TM-TELE EU SAP: 2418655 US SAP: 12939544

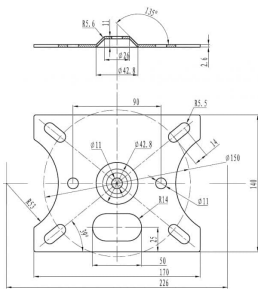
vav.link/tm-tele

Universal projector ceiling mount with telescopic pole

Overall length 440-735 mm (17.32" – 28.94")

Full adjustment: tilt at top for sloping ceilings / pitch and roll at the bottom

The TM-TELE Techmount is a projector ceiling bracket for anchoring any data projector safely to a ceiling. The telescopic design allows fast deployment and adjustment without the need cut and drill the pole. It has a greater range than most other telescopic mounts and the pole can be removed for "flush-mounting" the projector as close to the ceiling as possible. *Note: unlike the TM-1200 the length of this bracket cannot be extended.*



One-Man Installation

Thoughtful design detail include a length adjustment clamp system which requires only one hand.

Sloping Ceilings

A tilting mechanism is included which tilts to a full 90 degrees, allowing you to use the bracket as a boom if need be.

Safety Approved

A back-up fall-arrest tether is included which secures the projector to your bracket, and the pole has a mechanical stop so that the two parts of the pole cannot be separated. Vision recommends a maximum safe working load of 10kg which is well within the limits of the product and meets the BSi installation standard specification (PAS122:2009).

Easy fit

Projectors have threaded inserts in the bottom for attachment – but not all use the same diameter screws so Vision includes a selection to suit most projectors. Simply locate the "spider" arms on our bracket over the attachment holes, and insert a screw into the projector.

Obstruction-free Cable Management

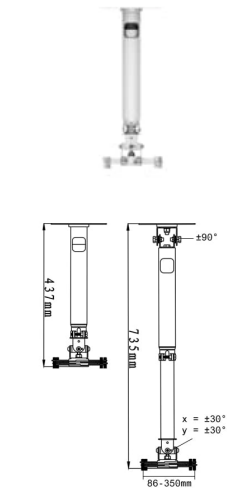
Vision's unique 'chute-through' system leaves cable access clear – even for big VGA connectors.

Tools Included

A spanner and pin-hex key are included. Vision also includes a hex-key bit for a power drill to speed up installation.

Secure

Quick-release mechanisms make life easier for thieves, so the TM-TELE is secure and features security bolts.



VISION

MANUAL

Manual

EN PDF 2.72 MB

files.visionaudiovisual.com/products/TM-TELE/manuals/TM-TELE_manual_en.pdf

Quick manual

EN PDF 374.18 KB

files.visionaudiovisual.com/products/TM-TELE/manuals/TM-TELE_quick_manual.pdf

Manual

EN PDF 353.70 KB

files.visionaudiovisual.com/products/TM-TELE/manuals/TM-TELE_manual.pdf

CAD

CAD

ZIP 1.15 MB

<files.visionaudiovisual.com/products/TM-TELE/cad/TM-TELE.zip>

CAD

VND.DWG 1.34 MB

<files.visionaudiovisual.com/products/TM-TELE/manuals/TM-TELE.dwg>

IMAGE

Product Images

ZIP 3.56 MB

<files.visionaudiovisual.com/products/TM-TELE/images/TM-TELE.zip>

Dimensions

JPEG 70.87 KB

<files.visionaudiovisual.com/products/TM-TELE/images/TM-ceiling-plate-dimensions.jpg>

Long

JPEG 17.39 KB

<files.visionaudiovisual.com/products/TM-TELE/images/TM-TELEv2-angle-long.jpg>

Product Images

JPEG 17.32 KB

<files.visionaudiovisual.com/products/TM-TELE/images/TM-TELEv2-short.jpg>

Product Images

JPEG 39.20 KB

<files.visionaudiovisual.com/products/TM-TELE/images/TM-TELE-dimensions.jpg>

Short

JPEG 17.77 KB

<files.visionaudiovisual.com/products/TM-TELE/images/TM-TELEv2-angle-short.jpg>

Product Images

JPEG 56.16 KB

<files.visionaudiovisual.com/products/TM-TELE/images/TM-TELEv2-long.jpg>

Menu

PNG 133.69 KB

files.visionaudiovisual.com/products/TM-TELE/images/TM-TELE_menu.png

SPECIFICATIONS

BOX DIMENSIONS

393 x 150 x 80 mm / 15.47" x 5.91" x 3.15"

PACKAGED WEIGHT

3 kg / 6.61 lbs

SAFE WORKING LOAD

10kg / 22.05 lbs

COLOUR

Satin White

ACCESSORIES INCLUDED

1 x H50 Pin-Hex key 1 x H50 power drill hex bit 1 x 17mm (0.7") Spanner 4 x M3 43mm (1.7") screws 4 x M4 43mm (1.7") screws 4 x M5 43mm (1.7") screws 4 x M6 43mm (1.7") screws 4 x M2.5 43mm (1.7") pan slot 4 x M8 50mm (2.0") Ceiling Fixtures with rawl plugs 1 x Safety Tether 1 x Ceiling Trim Disc

WARRANTY

Lifetime return-to-base

COMPLIANCES

TUV-GS

ORDER PART CODE

TM-TELE [EU SAP: 2418655 / US SAP: 12939544]

VISION