

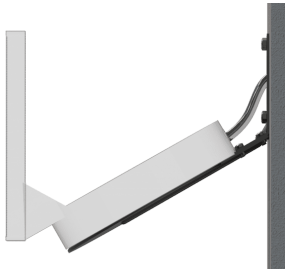
# Logitech Smartdock Wall Bracket

TM-SD EU SAP: 4204944 US SAP: 12939528

[vav.link/tm-sd](http://vav.link/tm-sd)

Wall Bracket with Cable Management  
Supports touchscreen at native 60° angle, or vertical  
Can fix to VESA desk or wall mount

This Techmount is designed exclusively for [LOGITECH Smartdock](#).



## Secure

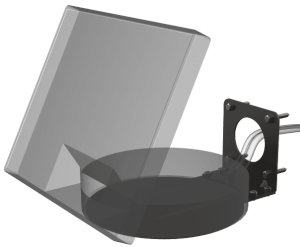
The Smartdock fixes to the shelf with screws on the underside out of sight, and cannot be removed.

## Two Shelf Angles

Two wall bracket parts are included. One supports the shelf horizontally, presenting the Smartdock's touch screen at the normal 60°. The other wall bracket presents the touch screen vertically.

## VESA Fixing

The TM-SD has 75 x 75mm holes on the wall plate, so it can be fixed directly to a wall, or fixed to an articulated wall or desk mount.



VISION



**VISION**

## MANUAL

---

Quick manual

**EN PDF 96.06 KB**

[files.visionaudiovisual.com/products/TM-SD/manuals/TM-SD\\_quick\\_manual.pdf](files.visionaudiovisual.com/products/TM-SD/manuals/TM-SD_quick_manual.pdf)

## CAD

---

CAD

**ZIP 657.38 KB**

<files.visionaudiovisual.com/products/TM-SD/cad/TM-SD.zip>

## IMAGE

---

Product Images

**ZIP 8.05 MB**

<files.visionaudiovisual.com/products/TM-SD/images/TM-SD.zip>

Side wall

**PNG 1.39 MB**

[files.visionaudiovisual.com/products/TM-SD/images/TM-SD\\_side\\_wall.png](files.visionaudiovisual.com/products/TM-SD/images/TM-SD_side_wall.png)

Side wall 60

**PNG 908.24 KB**

[files.visionaudiovisual.com/products/TM-SD/images/TM-SD\\_side\\_wall\\_60.png](files.visionaudiovisual.com/products/TM-SD/images/TM-SD_side_wall_60.png)

Side wall 90

**PNG 0.99 MB**

[files.visionaudiovisual.com/products/TM-SD/images/TM-SD\\_side\\_wall\\_90.png](files.visionaudiovisual.com/products/TM-SD/images/TM-SD_side_wall_90.png)

Front angle wall

**PNG 728.32 KB**

[files.visionaudiovisual.com/products/TM-SD/images/TM-SD\\_front\\_angle\\_wall.png](files.visionaudiovisual.com/products/TM-SD/images/TM-SD_front_angle_wall.png)

On VFM WA1X1

**PNG 252.12 KB**

[files.visionaudiovisual.com/products/TM-SD/images/TM-SD\\_on\\_VFM-WA1X1.png](files.visionaudiovisual.com/products/TM-SD/images/TM-SD_on_VFM-WA1X1.png)

Front angle 90

**PNG 1.89 MB**

[files.visionaudiovisual.com/products/TM-SD/images/TM-SD\\_front\\_angle\\_90.png](files.visionaudiovisual.com/products/TM-SD/images/TM-SD_front_angle_90.png)

Front angle 60

**PNG 1.41 MB**

[files.visionaudiovisual.com/products/TM-SD/images/TM-SD\\_front\\_angle\\_60.png](files.visionaudiovisual.com/products/TM-SD/images/TM-SD_front_angle_60.png)

Menu

**PNG 560.02 KB**

[files.visionaudiovisual.com/products/TM-SD/images/TM-SD\\_menu.png](files.visionaudiovisual.com/products/TM-SD/images/TM-SD_menu.png)

## SPECIFICATIONS

---

### BOX DIMENSIONS

250 x 210 x 57 mm ( 9.8" x 8.3" x 2.2")

### PACKAGED WEIGHT

1.4 kg / 3.1 lbs

### NET WEIGHT

1.1 kg / 2.4 lbs

### SAFE WORKING LOAD

5kg / 11 lbs

### COLOUR

Black

### MATERIAL

Steel – Painted

### WARRANTY

Lifetime return-to-base

### COMPLIANCES

n/a

### ORDER PART CODE

TM-SD [EU SAP: 4204944 / US SAP: 12939528]