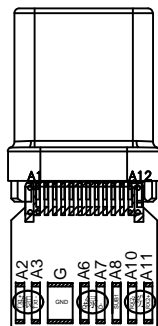


P1

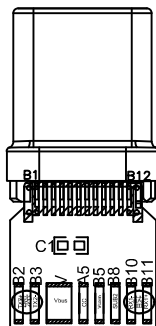
P2

L=1000MM 39.3"

Without chip



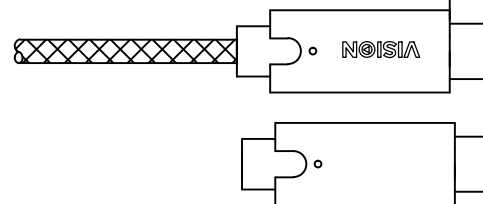
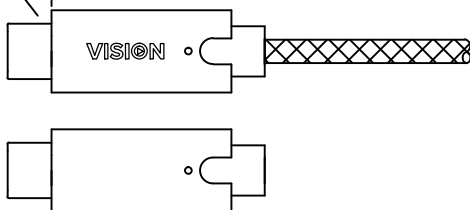
藍白 地 白 藍 灰 藍 白



藍白 紅 橙 紅 紫 藍 白

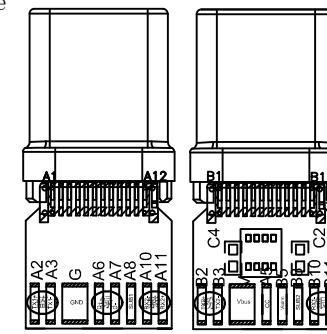
Nickelage
TYPE-C
Don't take
the chip

22AWG (42/0.10TC) *1C RED PVC+30AWG (7/0.10TC*0.5PE*1P+AL)*5P+30AWG (7/0.10TC*0.5PE)*4C+3E*13/0.10TC+400D Aramid+AL+SP64/0.10TC OD:4.1
75P Black PVC Black+White Braiding OD:4.5



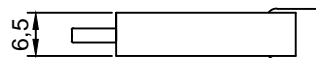
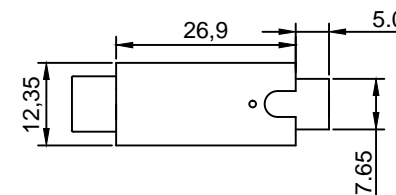
Nickelage
TYPE-C
With the
chip

With chip



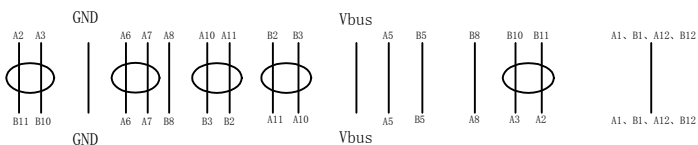
白 藍 地 白 藍 紫 白 藍 白 藍 紅 橙 紅 灰 白 藍

A12	A11	A10	A9	A8	A7	A6	A5	A4	A3	A2	A1
GND	RX2+	RX2-	Vbus	SBU1	D-	D+	CC	Vbus	TX1-	TX1+	GND
GND	TX2+	TX2-	Vbus	Vconn			SBU2	Vbus	RX1-	RX1+	GND
B1	B2	B3	B4	B5	B6	B7	B8	B9	B10	B11	B12

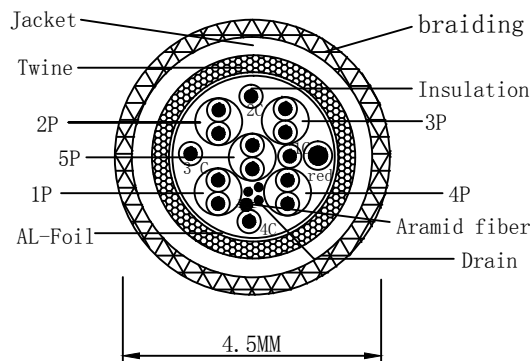


Have a chip

PIN Assignment:



Don't take the chip



Remark :

- 100% on-off test
- Test 3A current through 4.75v-5v, and the data transmission is OK
- The exposed size of USB C head is 6.65±0.1mm
- The product conforms to RoHS standard.

Length tolerance	Autograph	Date		
L≤1.5m ±20mm	Drafting: CJJ	2019.01.19		
	Check:		Drawing number	USB.2CC.025
	Approval:		Customer number	
		Revision reason	Edition	A0