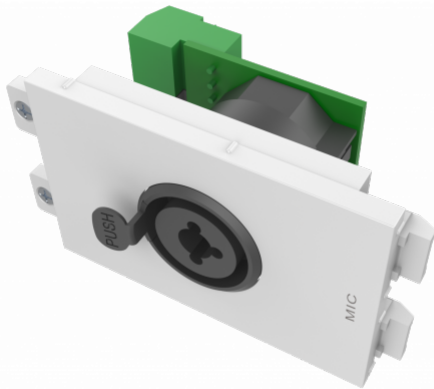


Phoenix connector at rear
Occupies 2 module spaces



This module is part of Vision's Techconnect connectivity faceplate family.

Double-space

Double-space accommodates a professional audio XLR connector for microphones and balanced line-level signals. Also accommodates 6.3mm Jack plugs.

Fixes to Surround

Techconnect modules fix into a surround, which in turn fixes to a backbox, mudring (for hollow walls), or a table faceplate.

Future-proof

If you break a module or need to change it in the future, just replace that part - not the entire faceplate.

Flexible

Get to site and the client changes what they want on their AV faceplate? No problem.

SPECIFICATIONS

COLOR

White

MATERIAL

ABS Plastic

PRODUCT DIMENSIONS

64 x 42 x 46 mm / 2.5" x 1.65" x 1.81" (height x width x depth)

PRODUCT WEIGHT

0.04 kg (0.09 lb)

PACKAGED WEIGHT

0.04 kg (0.09 lb)

PACKAGED DIMENSIONS

120 x 200 mm / 4.7" x 7.9"

