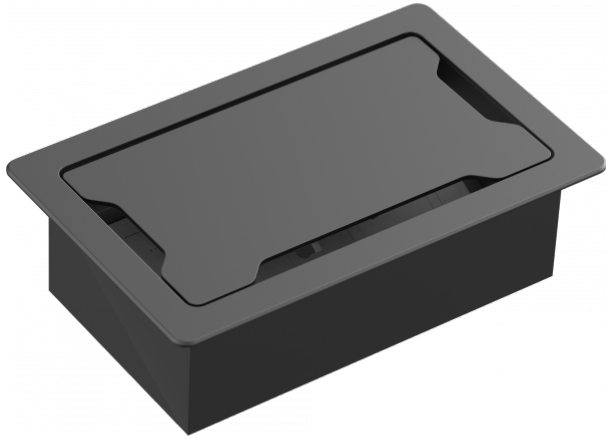


- Fits into table
- Chassis and surround included
- Accommodates up to 9 modules (not included)
- Very high quality fit and finish
- Matt black



Part of Vision's Techconnect modular AV faceplate family, this table surround allows seamless AV integration into boardroom and meeting room tables.

### Tactile Quality

Lift the lid and feel the weight. Strong, finely finished materials have been selected to make this product.

### Slow-Close

Throw the lid closed and a damper slows the lid, closing silently.

### 9-Module Capacity

Mix and match the modules you need in a future-proof enclosure.

### Optional Power Sockets

Choose Vision's Schuko (EU) or 1363 (UK) power socket modules (Part numbers TC3 PWREU or TC3 PWRUK). As each of these modules occupies 3 module spaces you can have up to three.

### Plug-In or Pull-Up

Choose to use modules you plug into, or use the pull-up module (part number TC3 PULLUP) to pull cables up from under the table.

### Plug In And Close

A 15 mm / 0.6" gap around the lid means you can plug-in or pull-up, then close the lid to get back table space for your meeting.

### A4

The bezel is very similar in size to an A4 piece of paper - slightly narrower.

### Cable Tie Points

Vision takes ease of installation seriously. Installers will enjoy multiple 6 mm / 0.23" fixing holes for securing cables underneath the chassis.

## SPECIFICATIONS

**OVERALL DIMENSIONS**

Width: 295 mm / 11.6" Length: 185 mm / 7.3" Depth: 89 mm / 3.5"

**CUTOUT DIMENSIONS**

Minimum: 255 mm (10.0") x 145 mm (5.7") Overlap: 20 mm (0.8")

**COLOUR**

Chassis, Lid, and Bezel: Matt Black Surround: White

**TECHCONNECT MODULE CAPACITY**

9

**MATERIAL**

Chassis: Steel Lid and Bezel: Cold-rolled Steel Surround: Plastic

**PACKAGED WEIGHT**

3 kg (6.61 lbs)

**PACKAGED DIMENSIONS**

320 x 200 x 100 mm / 12.6" x 7.9" x 3.9" (Length x Width x Depth )

