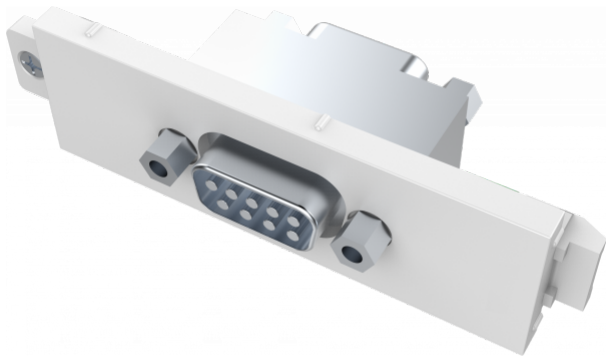


Ideal for control applications

9-pin D-sub connectors on the rear too instead of phoenix connectors

Occupies 1 module space



This module is part of Vision's Techconnect connectivity faceplate family.

Fixes to Surround

Techconnect modules fix into a surround, which in turn fixes to a backbox, mudring (for hollow walls), or a table faceplate.

Future-proof

If you break a module or need to change it in the future, just replace that part - not the entire faceplate.

Flexible

Get to site and the client changes what they want on their AV faceplate? No problem.

Strong

Techconnect parts are robust for the rigours of every day use. They include strengthening ribs and reinforcing where required.

Proven

For over 15 years Techconnect has improved and developed into one of the most popular AV faceplates in the world.

SPECIFICATIONS

COLOR

White

MATERIAL

ABS Plastic

PRODUCT DIMENSIONS

64 x 21 x 18 mm / 2.5" x 0.83" x 0.71" (height x width x depth)

PRODUCT WEIGHT

0.03 kg (0.07 lb)

PACKAGED WEIGHT

0.03 kg (0.07 lb)

PACKAGED DIMENSIONS

90 x 150 mm / 3.5" x 5.9"

