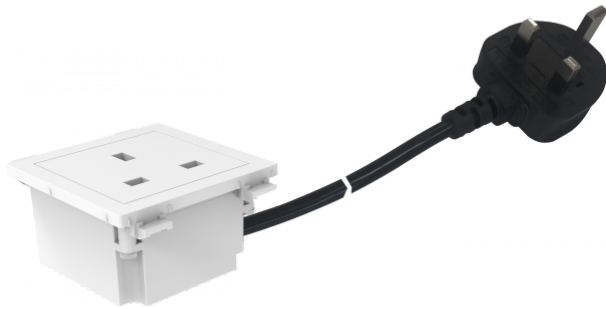


Occupies 3 module spaces

Grounded UK power socket

Ideal for table applications in Vision's table faceplate



This module is part of Vision's Techconnect modular faceplate family. It allows a power socket to be put in a faceplate right next to AV modules.

Cable Pre-terminated

Quality power cable is pre-wired to rear of the module. Just plug it into a power source in the floor, or if using on the wall a wall socket nearby.

Cable Length

The cables is 850 mm (33.5") long - ideal for plugging into a floor box under a table.

Approved

Quality shuttered socket comes fully approved for use in the UK with a BS 1363 plug.

Modular

As part of the faceplate system, you can have up to three power socket modules in Vision's TC3 SURRTB table faceplate.

SPECIFICATIONS

POWER SOCKET TYPE

Grounded BS 1363

REQUIRED MODULE SPACES

3

CABLE COLOUR

Black

CONDUCTOR DIAMETER

3 x 1 mm² (0.04")

CABLE OUTER DIAMETER

7.0 mm (0.28")

CABLE LENGTH

850 mm (33.5")

MATERIAL

PC

PACKAGED WEIGHT

0.25 kg (0.55 lbs)

PACKAGED DIMENSIONS

160 x 160 x 65 mm / 6.3" x 6.3" x 2.6" (Length x Width x Depth)