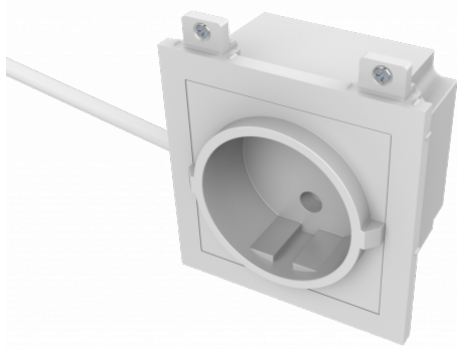


Occupies 3 module spaces
 Grounded EU power socket
 Ideal for table applications in Vision's table faceplate



This module is part of Vision's Techconnect modular faceplate family. It allows a power socket to be put in a faceplate right next to AV modules.

Cable Pre-terminated

Quality power cable is pre-wired to rear of the module. Just plug it into a power source in the floor, or if using on the wall a wall socket nearby.

Cable Length

The cables is 850 mm (33.5") long - ideal for plugging into a floor box under a table.

Approved

Quality shuttered socket comes fully approved for use in the EU with a BS 1363 plug.

Modular

As part of the faceplate system, you can have up to three power socket modules in Vision's TC3 SURRTB table faceplate.

SPECIFICATIONS

COLOR

White

PRODUCT DIMENSIONS

64 x 63 x 42 mm / 2.5" x 2.48" x 1.65"

PRODUCT WEIGHT

tbc

PACKAGED WEIGHT

tbc

PACKAGED DIMENSIONS

tbc

POWER SOCKET TYPE

Grounded Schuko Socket

REQUIRED MODULES SPACES

3

CABLE COLOUR

Black

CABLE LENGTH

850 mm (33.46")

CONDUCTOR DIAMETER

3 x 1 mm² (0.04")

CABLE OUTER DIAMETER

7.0 mm (0.28")

MATERIAL

ABS Plastic

