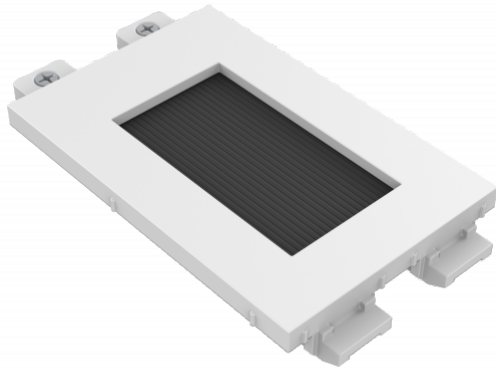


Simple double-width module with hole for pulling cables out
 Brushes over 42 x 22 mm (1.65" x 0.87") cable aperture
 Occupies 2 module spaces



This module is part of Vision's Techconnect connectivity faceplate family.

Fixes to Surround

Techconnect modules fix into a surround, which in turn fixes to a backbox, mudring (for hollow walls), or a table faceplate.

Future-proof

If you break a module or need to change it in the future, just replace that part - not the entire faceplate.

Flexible

Get to site and the client changes what they want on their AV faceplate? No problem.

Strong

Techconnect parts are robust for the rigours of every day use. They include strengthening ribs and reinforcing where required.

Proven

For over 15 years Techconnect has improved and developed into one of the most popular AV faceplates in the world.

SPECIFICATIONS

COLOR

White

MATERIAL

PC

PRODUCT DIMENSIONS

64 x 42 x 15mm/ 2.52"x 1.65"x 0.59"

PACKAGED WEIGHT

34 g (0.1 lb)

PACKAGED DIMENSIONS

90 x 150 mm/ 3.54" x 5.91"