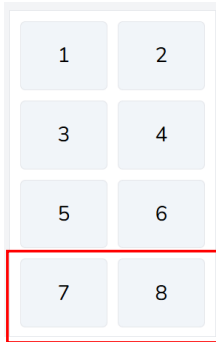


STEP 1: PUT MODULE INTO UPDATE MODE

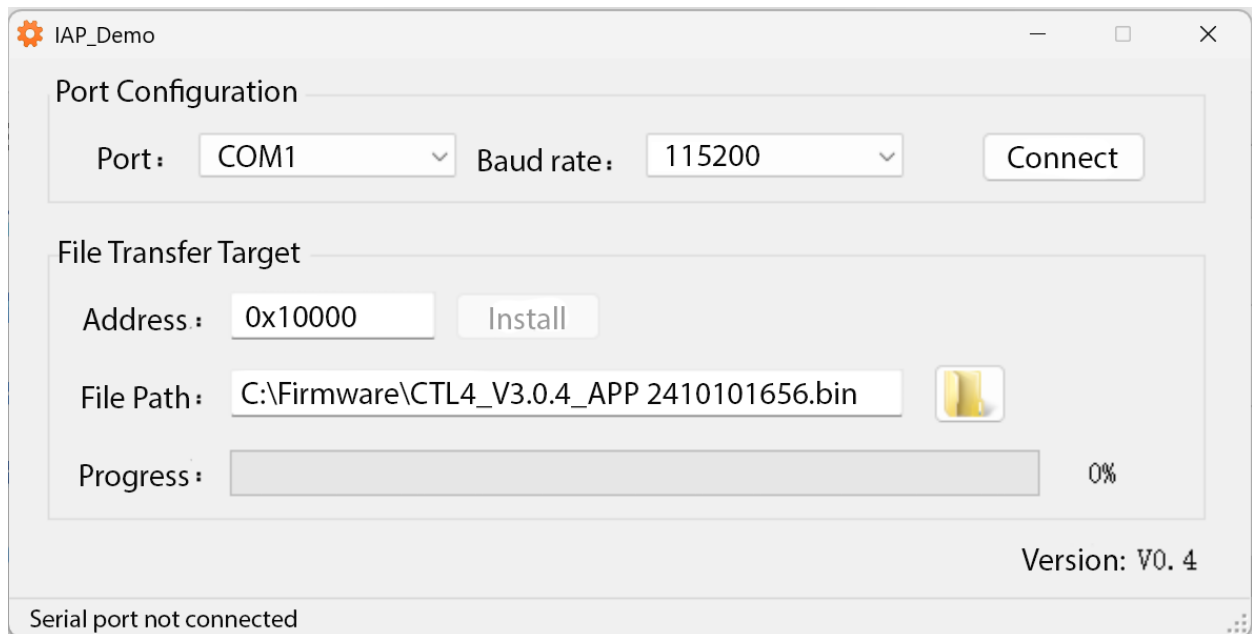
- a) Disconnect power and USBC
- b) Plug them in again, and within 3 seconds press and hold buttons 7 and 8:



When you hear beep for 3 seconds, it is in update mode.

STEP 2: RUN IAP SOFTWARE

- a) Select COM port and baud rate, then select *Connect*
- b) Enter the details as below.
Set address as below (VERY important)
Set the .bin file path.
Select *Install*



Alternating flashing red and blue lights indicates success. The device will put itself into normal mode.