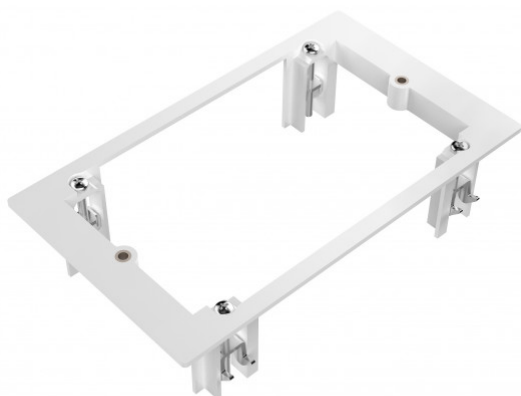


Fixes double-gang Techconnect surround into hollow dry walls
Flush Mount



This mudring is part of Vision's Techconnect modular faceplate family. It attaches a surround to the wall.

Fixes to Hollow Walls

This mudring fixes double-gang Techconnect surround into hollow dry walls.

Future-proof

If you break a module or need to change it in the future, just replace that part - not the entire faceplate.

Flexible

Get to site and the client changes what they want on their AV faceplate? No problem.

Strong

Techconnect parts are robust for the rigours of every day use. They include strengthening ribs and reinforcing where required.

Proven

For over 15 years Techconnect has improved and developed into one of the most popular AV faceplates in the world.

SPECIFICATIONS

COLOR

White

MATERIAL

ABS Plastic

PRODUCT DIMENSIONS

86 x 146 x 35 mm / 3.4" x 5.7" x 1.4" (height x width x depth)

PRODUCT WEIGHT

0.1 kg (0.22 lb)

PACKAGED WEIGHT

0.1 kg (0.22 lb)

PACKAGED DIMENSIONS

160 x 240 mm /6.3" x 9.4"

