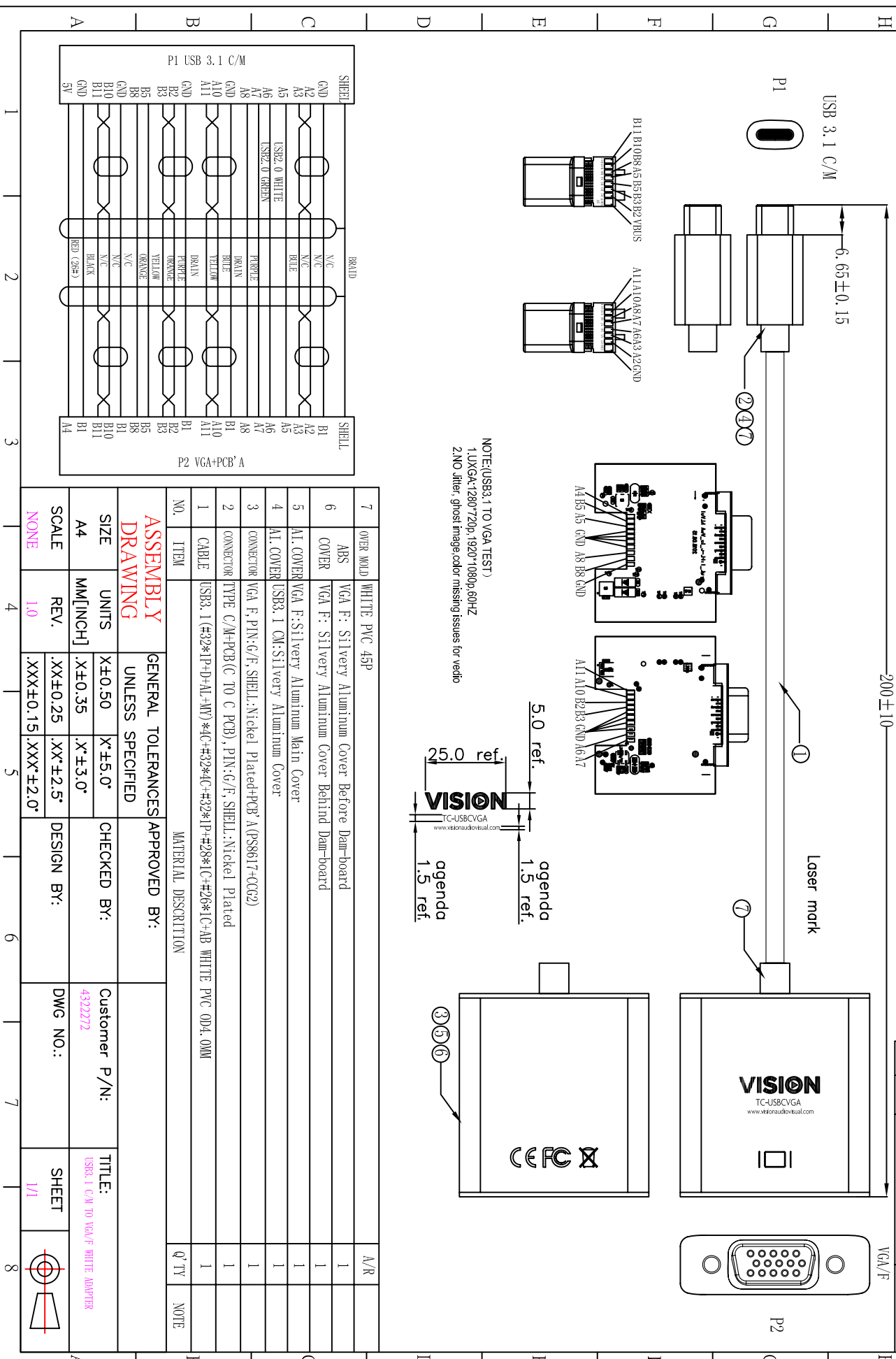
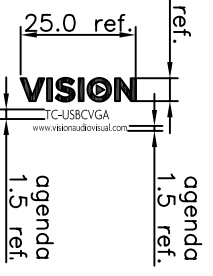


ROHS-COMPLIANT

REV.	LTR	ECN/DESCRIPTION	DATE
1.0		NEW RELEASE	2017/06/21



NOTE:(USB3.1 TO VGA TEST)
 1.UXGA-1280*720p, 1920*1080p, 60HZ
 2.NO Jitter, ghost image,color missing issues for video



SHEET		BR11D		SHEET	
GND	A2	V/C	B1	B1	B1
A3	A3	V/C	A2	B2	B2
A5	A5	BLUE	A3	B3	B3
A6	A6	USB2: 0 WHITE	A4	B4	B4
A8	A8	USB2: 0 GREEN	A6	B6	B6
A10	A10	ORANGE	A7	B7	B7
A11	A11	YELLOW	A8	B8	B8
GND	B2	PURPLE	A9	B9	B9
GND	B3	DRAIN	A10	B10	B10
GND	B5	DRAIN	A11	B11	B11
GND	B8	ORANGE	B1	B1	B1
GND	B10	YELLOW	B2	B2	B2
GND	B11	ORANGE	B3	B3	B3
5V	B11	ORANGE	B4	B4	B4
		RED (2#+)	B5	B5	B5
			B6	B6	B6
			B7	B7	B7
			B8	B8	B8
			B9	B9	B9
			B10	B10	B10
			B11	B11	B11
			B1	B1	B1
			B2	B2	B2
			B3	B3	B3
			B4	B4	B4
			B5	B5	B5
			B6	B6	B6
			B7	B7	B7
			B8	B8	B8
			B9	B9	B9
			B10	B10	B10
			B11	B11	B11
			B1	B1	B1

NO.	ITEM	MATERIAL DESCRIPTION	QTY	NOTE
1	CABLE	(USB3.1 (#2*P+D+AL+MY)*4C+#2*4C+#2*P+#28*1C+#26*1C+AB WHITE PVC 0D4.0MM	1	
2	CONNECTOR	VGA F, PIN:G/F, SHELL: Nickel Plated+PCB A (PS8617+CCG2)	1	
3	CONNECTOR	VGA F, PIN:G/F, SHELL: Nickel Plated+PCB A (PS8617+CCG2)	1	
4	AI COVER	USB3.1 CM: Silver Aluminum Main Cover	1	
5	AI COVER	VGA F: Silver Aluminum Cover	1	
6	COVER	VGA F: Silvery Aluminum Cover Behind Dam-board	1	
7	OVER MOD	WHITE PVC 45P	A/R	

ASSEMBLY DRAWING	GENERAL TOLERANCES/UNLESS SPECIFIED	APPROVED BY:
SIZE	X±0.50	CHECKED BY:
A4	M[M][INCH]	DESIGN BY:
SCALE	1.0	DWG NO.:

TITLE:	USB3.1 C/M TO VGA/F WHITE ADAPTER
SHEET	1/1

