



# TC-MATRIX Digital Signage HDMI-over-IP Matrix

TC-MATRIX TX EU SAP: 4631209 US SAP: 13293711 TC-MATRIX RX EU SAP: 4631210 US SAP: 13293566

[visionaudiovisual.com/tc-matrix](http://visionaudiovisual.com/tc-matrix)

Transmits HDMI over a network or Point-to-Point  
Plug-and-Play; no PC necessary for basic setup  
4K @ 60Hz (H.264)  
Supports video walls up to 3x3

Designed for video transmission applications the Techconnect Matrix allows distribution of HDMI content over an existing LAN infrastructure. You simply need a transmitter for each source, and a receiver for each display.

**VISION**



## Switch / Distribute / Matrix

This product uses an IP network to distribute, switch, or matrix. It can have up to 100 x transmitters, and 100 x receivers.

## Managed Switch

A “layer-3” switch is required with IGMP snooping turned on to allow multicasting. You don’t need to know what this means, but it is essential it is turned on.

## Shared Subnet

All end points must be on the same sub-net.

## 4Kx2K

With a maximum transfer rate of 18 Gbps and using H.264 compression this system supports 4K.

## Point-to-Point

You can connect a transmitter directly to a receiver with a CAT6 cable and use it as a simple extender. Maximum cable length up to 120 m (394 ft).

## Scaleable

Whether you need a small system or a large system; just buy what you need. When your system needs to grow just add more end points. Transmitters and receivers are sold separately.

## Easy Setup and Switching

Each transmitter and receiver should be set to a unique channel on the front panel. Adjust the “TX Connected” channel on each receiver to select the target transmitter. Use the buttons on the front panel or the included remote control to change channels.

## Advanced Software

Setup software is included for Mac and PCs. It scans for devices and allows the integrator to set device name, channel and IP address.

## Video Wall Presets

Supports up to 3x3 video walls. Enter video wall mode and choose from 3x3, 3x2, 3x1, 2x2, 2x3, 1x3. Fine tune with bezel adjustment.

## IR Passback

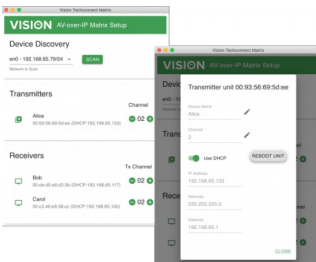
The system supports IR passback so source devices can be controlled remotely. IR emitter and receiver cables are included with each device. Note: sends IR commands from Tx-Rx or Rx-Tx as required.

## Crestron and AMX drivers

Designing a system controlled by a Crestron or AMX control system is easy.

## Hot Swap

If a device needs swapping simply replace it and set the channel on the new device to match the old device. IP and Mac addresses don’t need to be modified.



## MANUAL

AMX drivers

**EN ZIP 5.91 MB**

[files.visionaudiovisual.com/products/TC-MATRIX/manuals/TC-MATRIX\\_AMX\\_drivers.AXW](https://files.visionaudiovisual.com/products/TC-MATRIX/manuals/TC-MATRIX_AMX_drivers.AXW)

Crestron drivers

**EN ZIP 2.36 MB**

[files.visionaudiovisual.com/products/TC-MATRIX/manuals/TC-MATRIX\\_Crestron\\_drivers.zip](https://files.visionaudiovisual.com/products/TC-MATRIX/manuals/TC-MATRIX_Crestron_drivers.zip)

Manual

**EN PDF 1.12 MB**

[files.visionaudiovisual.com/products/TC-MATRIX/manuals/TC-MATRIX\\_manual\\_en.pdf](https://files.visionaudiovisual.com/products/TC-MATRIX/manuals/TC-MATRIX_manual_en.pdf)

## SOFTWARE

TechconnectMatrix setup software

**ZIP 156.50 MB**

[files.visionaudiovisual.com/products/TC-MATRIX/software/TechconnectMatrix\\_setup\\_software.zip](https://files.visionaudiovisual.com/products/TC-MATRIX/software/TechconnectMatrix_setup_software.zip)

## IMAGE

Product Images

**ZIP 2.84 MB**

[files.visionaudiovisual.com/products/TC-MATRIX/images/TC-MATRIX.zip](https://files.visionaudiovisual.com/products/TC-MATRIX/images/TC-MATRIX.zip)

## SPECIFICATIONS

### PRODUCT DIMENSIONS

164 x 108.5 x 23.6 mm / 6.46" x 4.27" x 0.93" (length x width x height)

### PACKAGED DIMENSIONS

357 x 153.5 x 85 mm / 14" x 6.04" x 3.35"

### PRODUCT WEIGHT

330g / 0.73 lb

### PACKAGED WEIGHT

0.8kg / 1.76 lb

### CONSTRUCTION MATERIAL

Metal

### COLOUR

Black

### INPUT AND OUTPUT TMDS SIGNAL

0.7-1.5 volts p-p

### INPUT AND OUTPUT DDC SIGNAL

5 volts p-p (TTL)

### MAXIMUM VIDEO FORMAT SUPPORTED

4K

### OUTPUT VIDEO

HDMI 2.0 with HDCP 2.2

### OUTPUT AUDIO

PCM

### COMPRESSION

H.264

### INPUT AND OUTPUT HDMI CABLE LENGTH

5m (16.4 ft) AWG 26

### VIDEO LATENCY

< 500 Ms

### SWITCH TIME

approx 5 seconds (caused by HDCP handshake)

### OPERATING TEMPERATURE RANGE

0-50°C

### STORAGE TEMPERATURE RANGE

-10-70°C

### OPERATING HUMIDITY RANGE

0 to 90 % no condensation

### TX POWER CONSUMPTION

7 watts

### RX POWER CONSUMPTION

10 watts

### CAT6 MAXIMUM DISTANCE (IF CONNECTED PEER-TO-PEER DIRECTLY)

120 m (394 ft)

### IR PASSBACK BANDWIDTH

20-60 kHz

### ESD PROTECTION

1a Contact discharge level 3 / 1b Air discharge level 3 (Standard: IEC61000-4-2)

### CONNECTIVITY

1 x HDMI (type A) 1 x Ethernet (RJ45) 1 x DC Power (2-port phoenix) 1 x 3.5mm Minijack (IR)

### POWER SUPPLY

100-240v 50/60Hz AC 5 volt / 3 amp

### TRANSFORMER INTEGRATED INTO PLUG

### INCLUDES INTERCHANGEABLE PLUGS

UK/EU/US/AU

### DC TAIL LENGTH

1.8m

### TRANSFORMER DIMENSIONS

81 x 52 x 38mm / 3.2" x 2.05" x 1.5"

### ACCESSORIES INCLUDED

2 x Mounting ears 1 x Remote Control 1 x IR Emitter Cable 1 x IR Receiver Cable

### WARRANTY

Lifetime return-to-base

### COMPLIANCES

RoHS, WEEE, CE/EMC

### ORDER PART CODE

Transmitter TC-MATRIXTx [EU SAP: 4631209 / US SAP: 13293711] Receiver TC-MATRIXRx [EU SAP: 4631210 / US SAP: 13293566]

### SPARE POWER SUPPLY UNIT (PSU)

tbc [SAP: ]