



Powered Loudspeakers

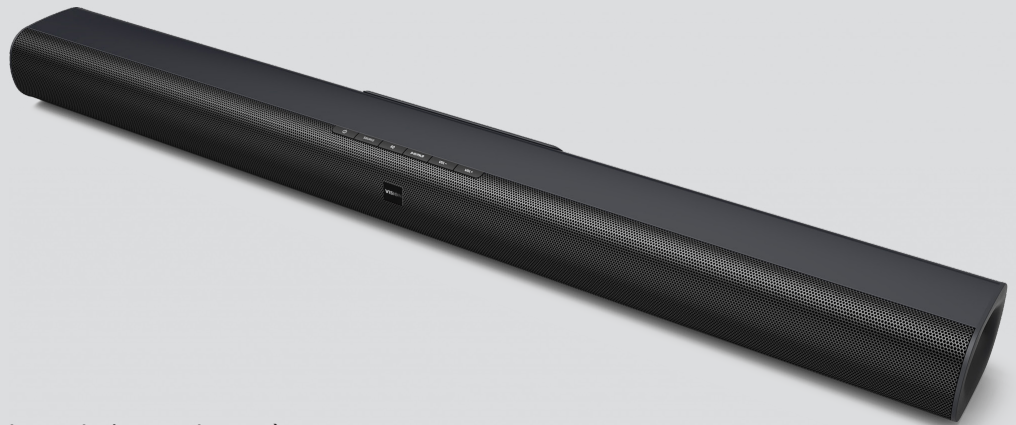
Loudspeakers with a built-in amplifier – also known as “powered” or “active” speakers – are a popular choice for AV installations in corporate and education spaces. Vision’s products in this space are exceptional value, extremely reliable, and offer compelling features.

SP-1900P

Article: 4801694

100w Active Soundbar Plus

- HDMI 2 in 1 out
- Minijack
- Remote control
- RS-232
- ARC HDMI Input
- Bluetooth input (re-nameable and pin can be set)

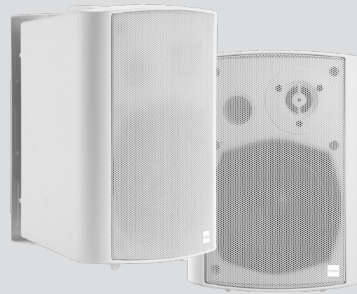


SP-900P

Article: 4820817

Pair 54w Active Loudspeakers

- Digital amplifier
- Two summed inputs
- Internal power supply
- Adjustable wall brackets
- 5.25” 2-way

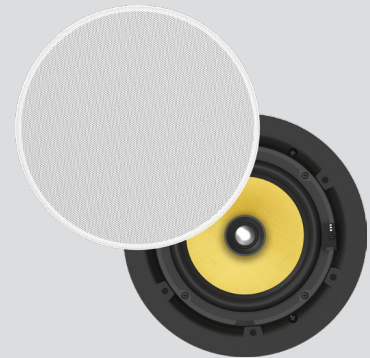


SP-1900P

Article: 4991366

Pair 60w Active Loud- speakers w/ Bluetooth

- Built-in amplifier
- Line-level input (RCA)
- Bluetooth 5.0
- RS-232 Control
- Tone control



CS-1900P

Article: 4820817

Pair 70w Active Ceiling Loudspeakers

- Integrated amplifier
- 1 x wired / 1 x Bluetooth
- Stand alone or daisy-chain
- IR remote included
- BT can be disabled

Amplifiers and Passive Loudspeakers

Choosing separate amplifiers and loudspeakers offers benefits such as the ability to use more than one pair of speakers, and convenient placement of the controls.



TC3 50w Amplifier

- Digital amplifier
- 2 x Stereo inputs
- IR Remote control
- Part of modular
- Techconnect system

TC3-AMP

Article: 3446595

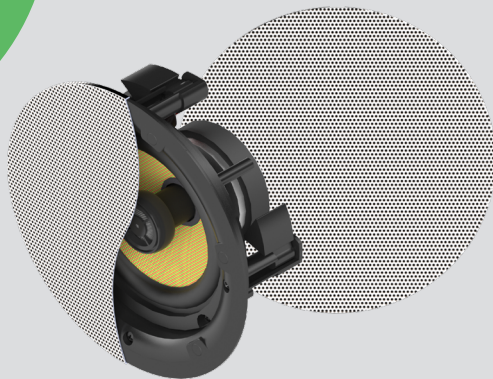


2x50w Mixer Amplifier

- True mixer amp
- 4 x Mic or line inputs
- 1 x Line-level Pre-Output
- Balanced Mic inputs
- with Phantom
- RS-232 control

AV-1900

Article: 5557274



Pair Ceiling Loudspeakers

- Magnetic grille
- Premium 6.5" woofer
- Large 0.75" silk tweeter
- Passive crossover

CS-1900

Article: 4815044



Pair Wall Loudspeakers

- 5.25" woofer
- 50w loudspeakers
- Wall brackets included
- with 60° range of tilt
- adjustment

SP-1800

Article: 3635038