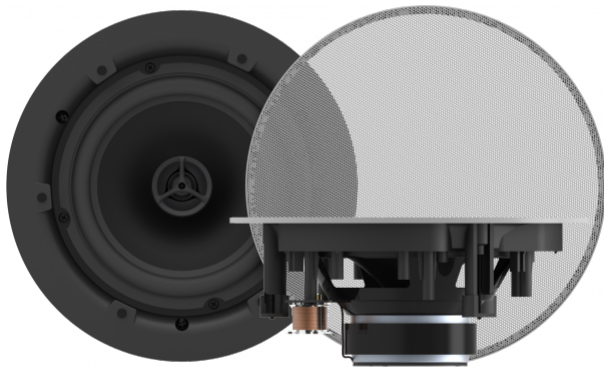


Beautiful bezel-less magnetic grille
6.5" Woofer, 0.5" Tweeter
Premium cross-over



The CS-1800 ceiling speakers feature a two-way design. They use the ceiling void as an infinite baffle – allowing un-damped driver excursion – all of which adds up to rich, detailed sound. The main driver is a 6.5" polypropylene cone complimented by an advanced 0.5" tweeter. These low impedance speakers do not sacrifice frequency range like 100/70v line speakers do. Perfect for meeting spaces.

Magnetic Grille

The grille clips into place magnetically once the speakers are secured.

Invisible

The grille extends all the way to the edge of the speaker resulting in virtually no visible edge. This sleek new style allows the technology to visually disappear.

Simple to fit

A cutout template is included so the installer can easily trace the cut line in the ceiling tile. Cut a 198 mm (7.8") hole and fit the speaker; it's quick and easy.

Shallow

Only 82 mm (3.2") deep, the CS-1800 can be placed optimally around the room. They fit in any environment which has a false ceiling.

Crossover

A high quality crossover circuit is included to split the work between the woofer and tweeter.

High Sensitivity

Ceiling speakers often lack the power of wall speakers, but the CS-1800 has a higher sensitivity of 90dB to cut through high-noise presentation environments.

SPECIFICATIONS

LOUDSPEAKER DIMENSIONS

232 x 92 mm / 9.1" x 3.6" (diameter 224 mm without grille)

CUTOUT SIZE

198 mm / 7.8"

CARTON DIMENSIONS

250 x 250 x 215 mm / 9.8" x 9.8" x 8.5"

SPEAKER WEIGHT

1.1 kg / 2.4 lbs (each)

CARTON WEIGHT

2.5 kg / 5.5 lbs (per pair)

POWER HANDLING

35 Watt RMS

WOOFER

6.5" Polypropylene

TWEETER

0.5" Silk

CONSTRUCTION MATERIAL

ABS Plastic

SPEAKER TERMINALS

Binding post

NOMINAL IMPEDANCE

8 ohms

SENSITIVITY

89dB (1w/1m)

FREQUENCY RESPONSE

50Hz-20kHz

COLOUR

White

WARRANTY

Lifetime return-to-base

COMPLIANCES

RoHS, WEEE, CE/EMC, C-TICK, FCC, REACH